

The lattice Boltzmann method for complex flow simulation

Ali Hosseini

PhD student co-supervised by Nasser Darabiha and Dominique Thévenin in CentraleSupélec and
Otto-von-Guericke-Universität Magdeburg

Tuesday, July 09th 2019 - 11:00 AM - Amphi II

The lattice Boltzmann method (LBM), is an on-lattice Lagrangian solver for the phase-space discretized Boltzmann equation. Over the past couple of decades it has grown into a rather popular alternative to classical numerical solvers for low Mach number flows.

In its most basic form, the scheme solves Boltzmann's equation (up to the Navier-Stokes scale) for a single species isothermal low Mach number flow. To go towards applications involving more complex physics, i.e. thermal multi-species flows, the scheme has to be extended accordingly.

During this talk, the classical LBM (derivation, algorithmic advantages, limitations) will be reviewed. Then major obstacles associated with thermal multi-species flow simulations with the LBM will be discussed, and finally possible solutions to these issues will be enumerated and illustrated with numerical examples.

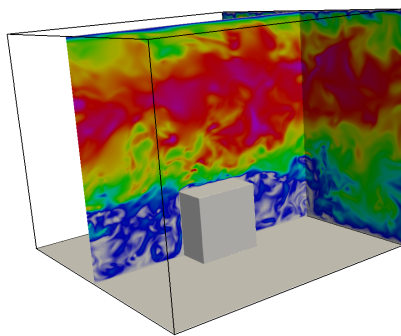


Figure 1: Instantaneous velocity field for channel flow with heated obstacle at a Reynolds number of 13100

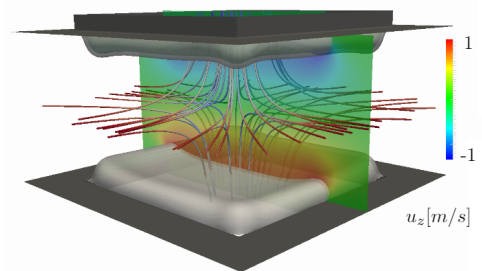


Figure 2: Propane/Air 3-D counter-flow flame steady-state velocity field, streamlines and reaction rate iso-surfaces